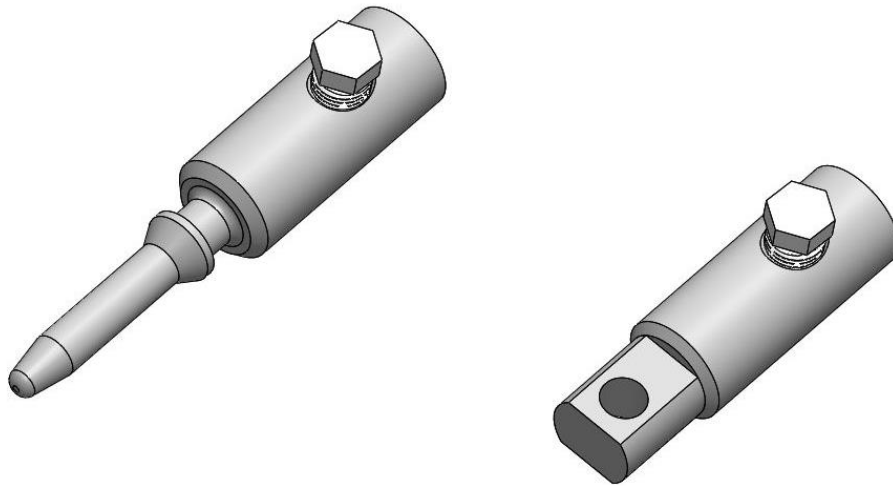


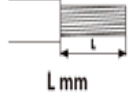

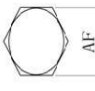


## Shear Bolt Connector-Installation Instruction

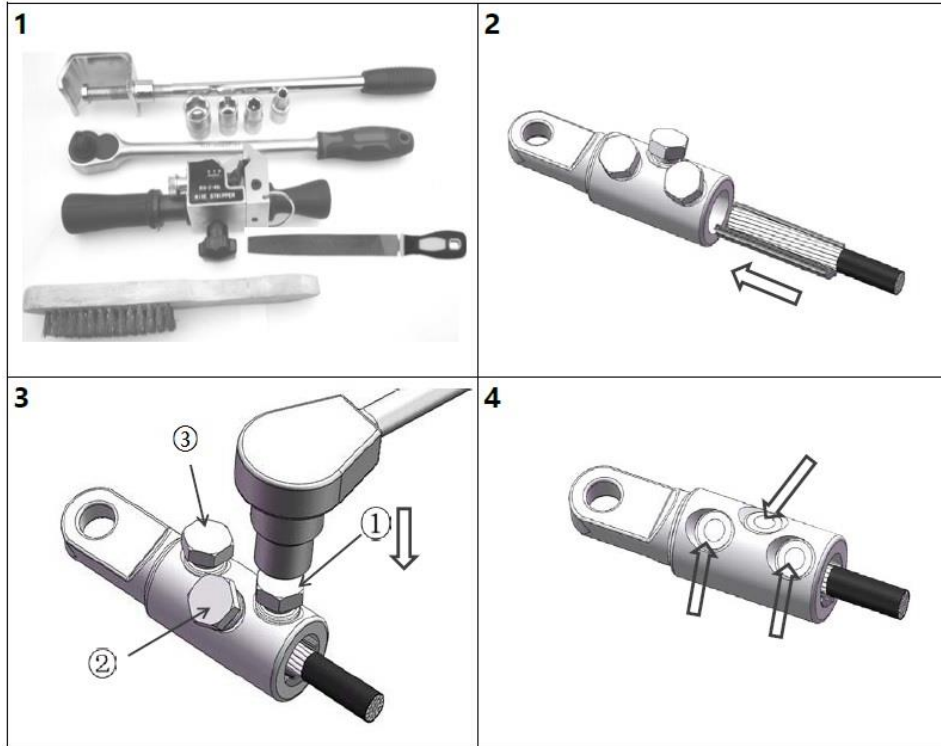


Product Range (Model)	 mm <sup>2</sup> Al Conductor Round	 mm <sup>2</sup> Cu Conductor Round	 L mm Stripping Length	 Remove Insret	 A/F mm Bolt Across Flat
25-50/1	25-50	25-50	40	25-50	10
70-95/1	70-95	70-95	40	70-95	13
120/1	120	120	40	120	13

Note: Different conductor material should be tested according to IEC 61238-1 given parameters.

# Shear Bolt Connector -Installation Instruction

## Installation Procedures



### Installation Steps:

1. Select the matching shear bolt connector and installation tools according to the type and size of Conductor as shown on the table(see photo 1);
2. Strip conductor insulation according to the specified length;
3. Remove the oxide layer on the conductor surface with a brush. Then apply contact grease provided in shear bolt connector and insert the conductor into shear bolt connector immediately(see photo 2);
4. Hand-tighten all bolts to fix the conductor at the center of the shear bolt connector;
5. Use a torque wrench to tighten the bolt slowly until the shear point breaks away. Tighten the bolts in. The sequence of 1 and 2 and 3 as shown in photo 3(Tighten bolts out-side-in);
6. Once the bolt shears off, use a file to even out all the sharp edges(see photo 4).

In as much as CHARDON GROUP, Inc. has no control over the use which others may put the material, it does not guarantee that the same results as those described herein will be obtained, Each user of the material should make his own tests to determine the material's suitability for his own particular use. Statements concerning possible uses of the materials described herein are not to be construed as constituting a license under any CHARDON GROUP, inc. patent covering such use or as recommendations for use of such materials in the infringement of any patent.

FOR FURTHER INFORMATION WRITE TO



[sales@chardongroup.com](mailto:sales@chardongroup.com)