

**35kV 600A/900A
Apparatus Bushing**



APPLICATION

The Chardon 35kV 600A/900A Apparatus Bushing meets all requirements of IEEE Standard 386-2016 (separable insulated connector system). It is designed for the termination of primary winding leads at the face plate of oil-filled (or approved equivalents) single phase and three phase transformers and switchgear rated at 21.1kV/35kV. The bushing is externally

mounted and clamped in place with stainless steel 4 hole mounting clamps. It fits in a 2.875 inch (73.0mm) hole on the apparatus tank wall. All 600 A/900A separable connectors manufactured according to IEEE Standard 386-2016 standard will operate with this bushing.

INSTALLATION

The Chardon bushing is installed on the tank wall of the SF6 gas filled (or approved equivalents) transformer or switchgear. The rubber gasket is placed in the groove on the rear side of the bushing well (facing

the transformer or switchgear). The steel clamp is then placed over the bushing, and through the threaded studs mounted on the tank wall. The clamp is then bolted in place.

PRODUCTION TESTS

- / AC 60Hz 1 Minute Withstand – 70 kV
- / Partial Discharge – 26 kV <5 pC

Internal CHARDON Quality assurance requirements:

- / Physical inspection
- / Periodic Fluoroscopic (X-ray) Inspection

VOLTAGE RATINGS

35-AB600/900

Standard Voltage Class	35 kV
Maximum Rating Phase-to-ground	21.1 kV
AC 60Hz 1 Minute Withstand	70 kV
DC 15 Minute Withstand	103 kV
BIL and Full Wave Cest	200 kV
Partial Discharge	26 kV < 5 pC

CURRENT RATINGS

Description	Test Parameters
35-AB600	
Continuous	600 amps rms
Short Time	<ul style="list-style-type: none">• 25,000 amps rms symmetrical for 0.17 s• 10,000 amps rms symmetrical for 3.0 s
35-AB900	
Continuous	900 amps rms
Short Time	<ul style="list-style-type: none">• 40,000 amps rms symmetrical for 0.17 s• 10,000 amps rms symmetrical for 3.0 s

ORDERING INFORMATION

35kV, 600A Apparatus Bushing w/o Clamping Plate,w/Earthing Lead	35-AB600-EL
35kV, 600A Apparatus Bushing w/o Clamping Plate,w/Earthing Plate	35-AB600-EP
35kV, 600A Apparatus Bushing w/ Fixed Stud, Nut, Gasket and 4 Hole Clamping Plate, w/Earthing Lead	35-AB600 4SS-EL
35kV, 600A Apparatus Bushing w/ Fixed Stud, Nut, Gasket and 4 Hole Clamping Plate, w/Earthing Plate	35-AB600 4SS-EP
35kV, 900A Apparatus Bushing w/o Clamping Plate,w/Earthing Lead	35-AB900-EL
35kV, 900A Apparatus Bushing w/o Clamping Plate,w/Earthing Plate	35-AB900-EP
35kV, 900A Apparatus Bushing w/Fixed Stud, Nut, Gasket and 4 Hole Clamping Plate, w/Earthing Lead	35-AB900 4SS-EL
35kV, 900A Apparatus Bushing w/Fixed Stud, Nut, Gasket and 4 Hole Clamping Plate, w/Earthing Plate	35-AB900 4SS-EP

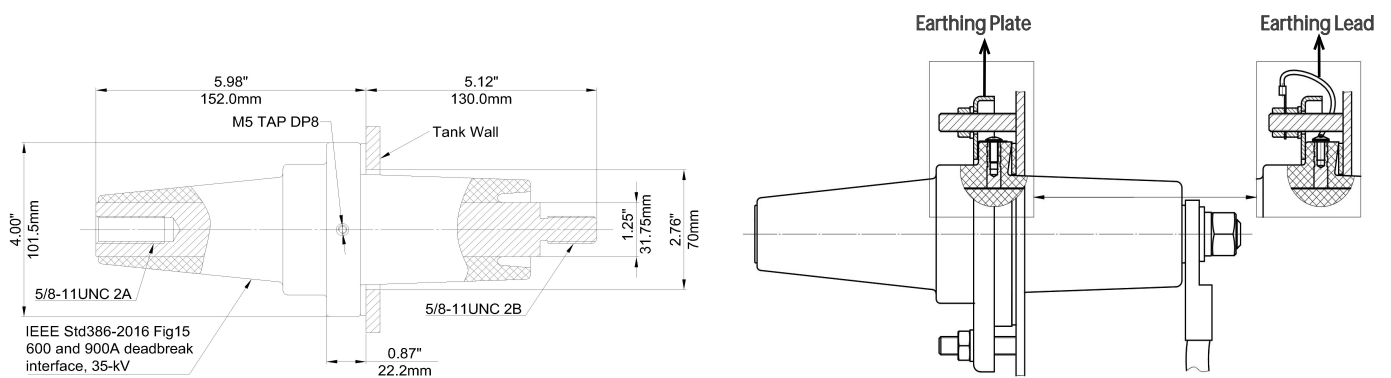


Figure 1. 35kV 600A/900A Apparatus Bushing

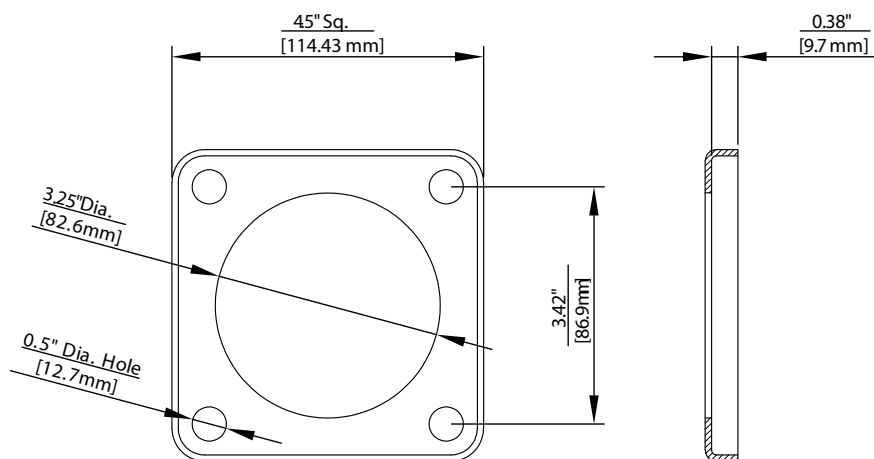


Figure 2. 4 Hole Clamp



ANHUI CHARDON ELECTRIC LTD.

No.808 Taiji Road Economic Develop Zone of Guangde County
Anhui China
Tel: 0563-2216688
Fax: 0563-2251806

CHARDON TAIWAN CORPORATION

No.37 Min-Chie Road, Tung Lo Industrial Park, Miao Li, Taiwan 366
Tel:+886-37-984385
Fax:+886-37-984770

SHANGHAI CHARDON ELECTRIC LTD.

Room 1202, office building No.399, Yun Gu Road, Jiading district,
Shanghai, China 201801
Tel: +86-21-39105900
Fax: +86-21-39105916

www.chardongroup.com·info@chardongroup.com