

# 15/25kV Deadbreak 200A Straight Connector



## APPLICATION

The Chardon Deadbreak Straight Connector is a fully shielded and insulated termination for connecting underground cable to transformers, switchgear and other apparatus equipped with deadbreak bushings, junctions, or other deadbreak connectors.

The Chardon Deadbreak Straight meets all the requirements of IEEE standard 386, and is fully interchangeable with competitor's products and mating products that meet IEEE Standard 386.

Chardon Deadbreak Straight Connectors are molded using high quality peroxide – cured insulating and semi-conducting EPDM rubber. All insulating rubber is compounded in house, using Chardon - developed proprietary formulations. Chardon Deadbreak Straight Connectors a copper probe. Combined with the bi-metal compression lug, this ensures a reliable operating connection.

## PRODUCTION TESTS

Tests conducted in accordance with IEEE/ANSI Standard 386.

- / Partial Discharge – 19 kV≤5pC
- / AC 1 Minute Withstand – 40 kV
- / Test Point Voltage Test

Tests conducted in accordance with Chardon manufacturing process requirements:

- / Physical Inspection
- / Periodic Dissection
- / Periodic X-ray Analysis

## VOLTAGE RATINGS

Voltage Class	25 kV
Max. Rating Phase to Ground	15.2 kV
AC 1 Minute Withstand	40 kV
DC 15 Minute Withstand	78 kV
BIL and Full Wave Crest	125 kV
Partial Discharge	19 kV≤5pC

• Revision Date: 12.18.2025

## CURRENT RATINGS

Description	Test Parameters
Continuous	200 amps rms
Short Time	• 10,000 amps rms symmetrical for 0.17 s • 3,500 amps rms symmetrical for 3.0 s

# DETAILED COMPOSITION OF THE CHARDON DEADBREAK STRAIGHT CONNECTOR

## / CAPACITIVE TEST POINT

Capacitive test point on molded Straight Connector with snap-on cap provides a shielded, hotstick operable means to determine circuit condition.

## / SEMICONDUCTING SHIELD

Precision molded peroxide cured semiconducting shield provides ground shield continuity and meets the requirements of IEEE Standard 592.

## / SEMICONDUCTING INSERT

Precision molded peroxide cured semiconducting insert provides corona-free electrostatic shielding of the compression connector.

## / CABLE ENTRANCE

The sized cable entrance provides an interference fit to maintain a watertight seal.

## / DRAIN WIRE TAB

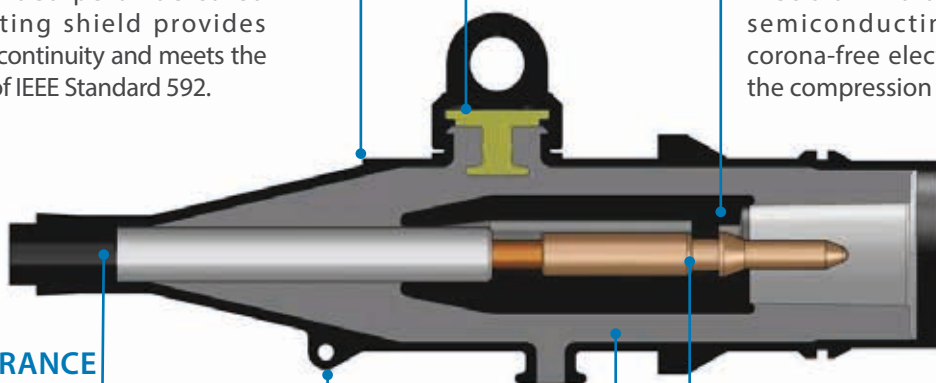
Drain wire tab provide a convenient point to connect drain wire to ensure grounding of the connector shield.

## / CONDUCTOR CONTACT

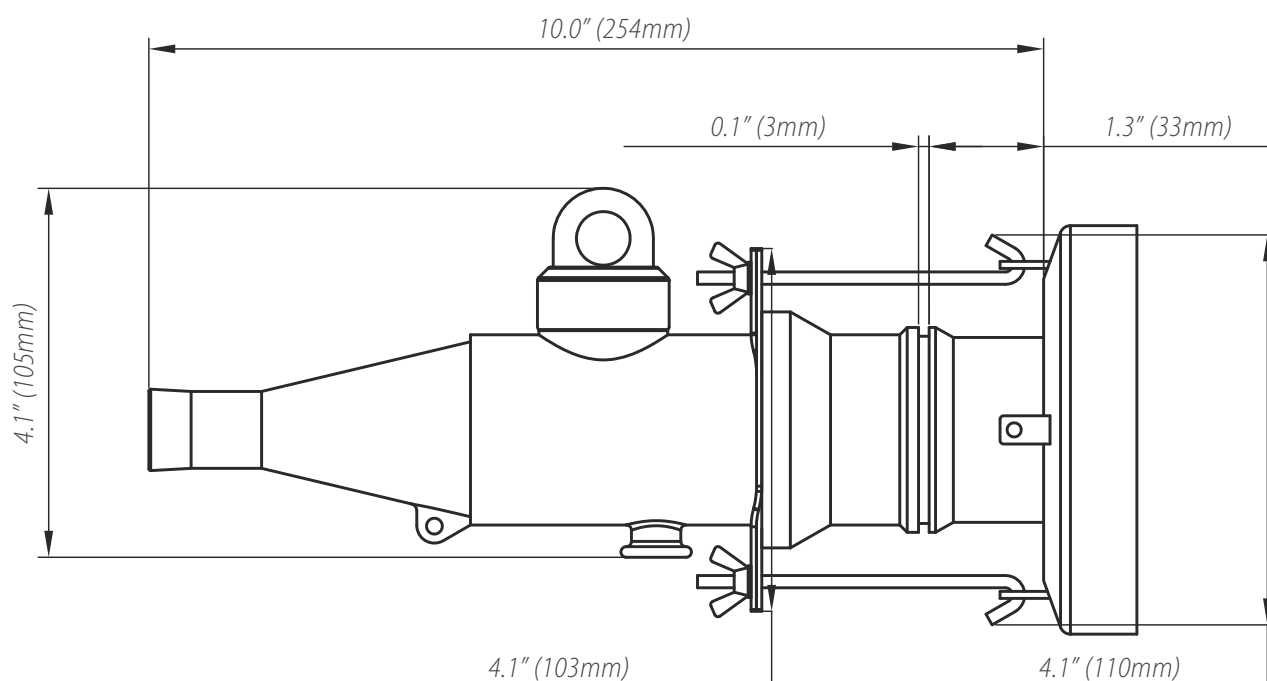
Tin plated copper connector ensures reliable electrical connection.

## / INSULATION LAYER

High quality peroxide cured EPDM insulation is mixed and formulated in-house for complete control of rubber characteristics.



## DETAILED COMPOSITION OF THE CHARDON DEADBREAK STRAIGHT CONNECTOR



## ORDERING INFORMATION

15/25kV Straight Connector

**Each kit Contains:**

- / Straight Connector body
- / Bi-Metal Compression Lug
- / Silicone Lubricant

- / Copper Probe
- / Bail Assembly
- / Installation Instruction Sheet

To order a Chardon 25kV Deadbreak Straight Connector Kit, follow the steps below:

25-DS200	"W"	"X"	"Y"	"Z"
----------	-----	-----	-----	-----

"W" = Enter **T** if want a Capacitive Test Point

"X" = Cable Range Code (See Cable Range Table)

"Y" = Conductor Code (See Conductor Table)

"Z" = Enter **C** if a Plated Copper Connector is needed

Enter **B** if a Bi-metal Connector is needed



## Cable Range Table (Insulation Diameter)

Cable Range Code	Inches	Millimeters
<b>AA</b>	0.508 - 0.685	12.9 - 17.4
<b>A</b>	0.642 - 0.807	16.3 - 20.5
<b>B</b>	0.768 - 0.945	19.5 - 24.0
<b>C</b>	0.906 - 1.106	23.0 - 28.1

## Conductor Code Table (Compression Connectors)

CONDUCTOR CODE	Concentric or Compressed		Compact or Solid	
	AWG or kcmil	mm <sup>2</sup>	AWG or kcmil	mm <sup>2</sup>
<b>01</b>	#6	-	#4	-
<b>02</b>	#4	-	#3	25
<b>03</b>	#3	25	#2	35
<b>04</b>	#2	35	#1	-
<b>05</b>	#1	-	1/0	50
<b>06</b>	1/0	50	2/0	70
<b>07</b>	2/0	70	3/0	-
<b>08</b>	3/0	-	4/0	95
<b>09</b>	4/0	95	250	120
<b>10</b>	250	120	300	-

Example :

To order a standard Chardon 25kV Deadbreak Straight Connector with a cable insulation diameter of 0.990", a 3/0 bi-metal compression connector, and a capacitive test point, order the part number 25-DS200TC08B.

## Shear Bolt Connector Selection Guide

Catalog No.	Conductor Range (mm <sup>2</sup> )	Remarks
<b>200SSBC-25-50/1-AL</b>	25-50	Only suitable for Cable Range Code <b>A</b>
<b>200SSBC-70-95/1-AL</b>	70-95	Only suitable for Cable Range Code <b>B</b> and <b>C</b>
<b>200SSBC-25-95/1-AL</b>	25-95	Only suitable for Cable Range Code <b>B</b> and <b>C</b>
<b>200SSBC-120/1-AL</b>	120	Only suitable for Cable Range Code <b>B</b> and <b>C</b>

Example:

For Shear Bolt Connector with a conductor Range between 25-50 mm<sup>2</sup>, the part number would be : 200SSBC-25-50/1-AL



**200SSBC Series**



**ANHUI CHARDON ELECTRIC LTD.**

No.808 Taiji Road Economic Develop Zone of Guangde  
County Anhui China

Tel: 0563-2216688

Fax: 0563-2251806

**CHARDON TAIWAN CORPORATION**

No.37 Min-Chie Road, Tung Lo Industrial Park, Miao Li,  
Taiwan 366

Tel: +886-37-984385

Fax: +886-37-984770

**SHANGHAI CHARDON ELECTRIC LTD.**

Room 1202, office building No.399, Yun Gu Road ,  
Jiading district, Shanghai, China 201801

Tel: +86-21-39105900

Fax: +86-21-391059166

[www.chardongroup.com](http://www.chardongroup.com) [info@chardongroup.com](mailto:info@chardongroup.com)