

**IEC Separable Connectors 17 kV/50
kV; 17 kV/45kV Coupling (Rear)
T-Body Surge Arrester**



APPLICATION

The Chardon T-Body Surge Arrester is an arrester combined within a coupling(rear) T-Body interface. It is designed to protect apparatus, including transformers, switchgear, and other equipment from high voltage surges due to lightning or switching.

KEY FEATURES

- Provides fully shielded deadfront arrester protection.

Metal (zinc) Oxide Varistor (MOV) gapless design.

EPDM insulation rubber molded around MOV module.
- Mounting can be vertical, horizontal, or any angle in between.

No minimum phase clearance requirements.

100% electrical tested at factory.

PRODUCT RATINGS

	17-RDTA50	17-RDTA45
Rated Voltage Class (Ur)	17 kV	17 kV
Nominal Discharge Current of Arrester	5 kA	5 kA
Residual Voltage of Nominal Discharge Current	≤ 50 kV	≤ 45 kV
Maximum Continuous Operating Voltage	13.6 kV	13.6 kV
Voltage of DC 1mA Current	≥ 25 kV	≥ 25 kV

PRODUCTION TESTS

- Tests conducted in accordance with IEC 60099-4.
- Partial Discharge – 15kV < 3pc
 - Voltage of DC 1mA Current – ≥ 25kV
- Tests conducted in accordance with Chardon manufacturing process requirements:
- Physical Inspection
 - Periodic Dissection
 - Periodic X-ray Analysis

· 17KV-IEC-TBS-REV121525

DETAILED COMPOSITION OF THE CHARDON
17 kV/50 kV; 17 kV/45 kV COUPLING (REAR) T-BODY SURGE ARRESTE

STUD

Tin plated, threaded copper stud.

CONDUCTING SHIELD

Precision molded peroxide cured conducting shield provides ground shield continuity and meets the requirements of IEEE Standard 592.

INSULATION LAYER

High quality peroxide cured EPDM Insulation is mixed and formulated in-house for complete control of rubber characteristics.

CONDUCTING INSERT

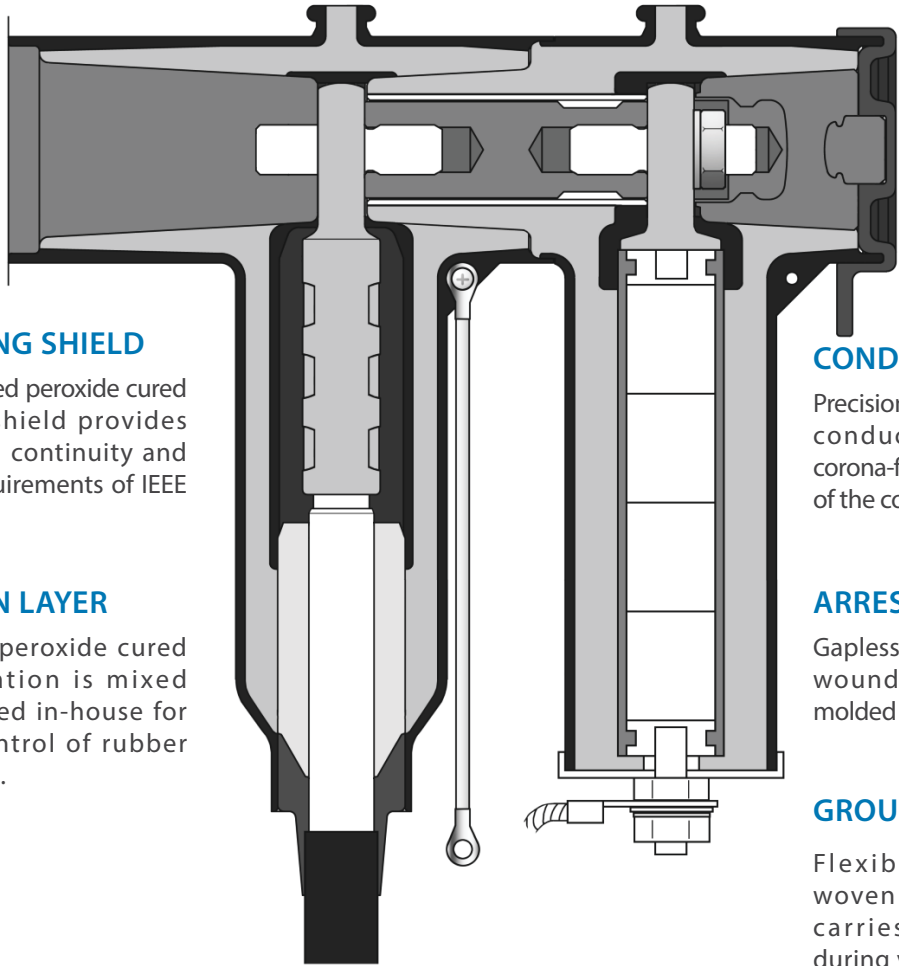
Precision molded peroxide cured conducting insert provides corona-free electrostatic shielding of the compression connector.

ARRESTER MODULE

Gapless MOV disks are filament wound. Insulation rubber is molded around the MOV module.

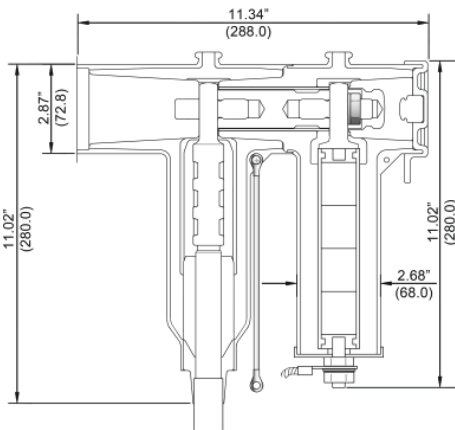
GROUNDING WIRE

Flexible copper stranded woven ground lead reliably carries current to ground during voltage surges.



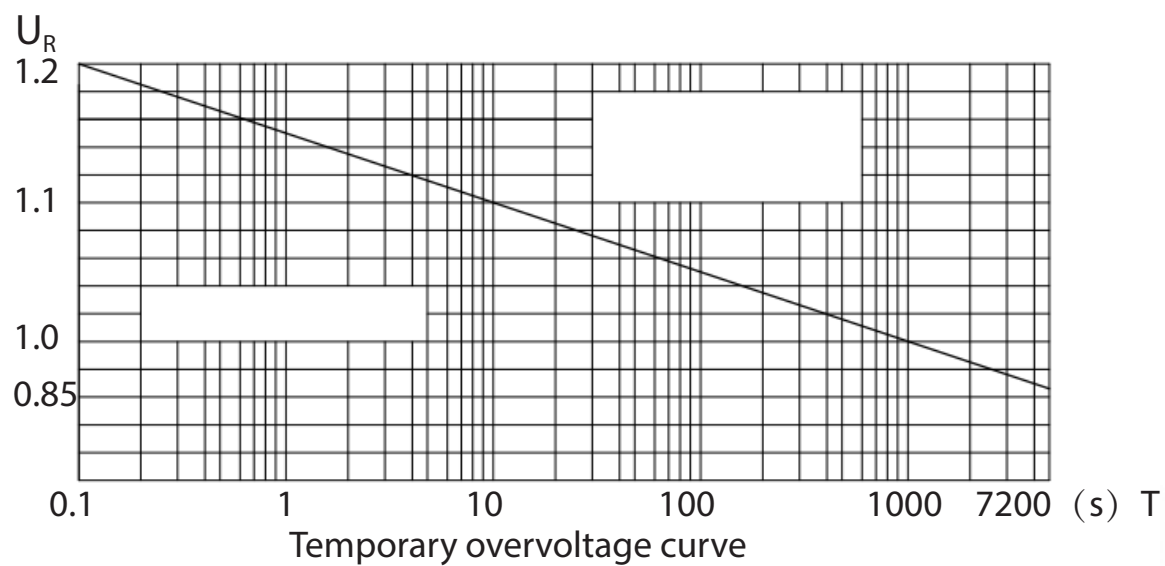
ORDERING INFORMATION

17kV/50kV Coupling(Rear) T-body Surge Arrester	17-RDTA50
17kV/45kV Coupling(Rear) T-body Surge Arrester	17-RDTA45



Temporary overvoltage (TOV) capability

The Temporary Overvoltage (TOV) capability of the surge arrester is shown as below



CHARDON TAIWAN CORPORATION

No.37 Min-Chie Road, Tung Lo
Industrial Park, Miao Li, Taiwan 366

Tel : +886-37-984385

Fax : +886-37-984770

www.chardongroup.com • info@chardongroup.com