

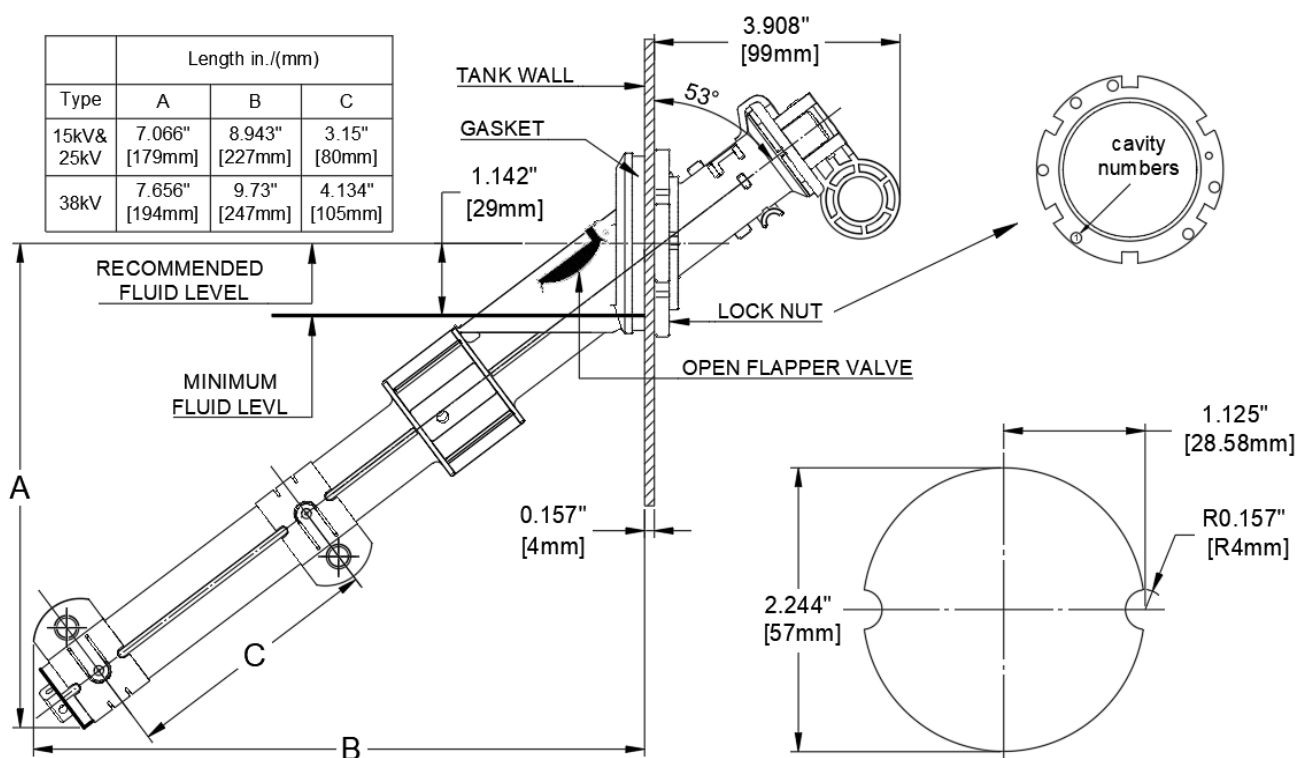
15kV&25kV&38kV ANSI Sidewall Mounted/ Cover Mounted Bay-O-Net Fuse Holder Installation Instructions

DANGER & IMPORTANT:

1. All apparatus must be installed and operated in accordance with individual user, local and national work rules. These instructions do not attempt to provide for every possible contingency.
2. Read entire installation instructions before starting. Have all required tools at hand and maintain cleanliness throughout the procedure.

Step 1 Installation of the Fuse Holder:

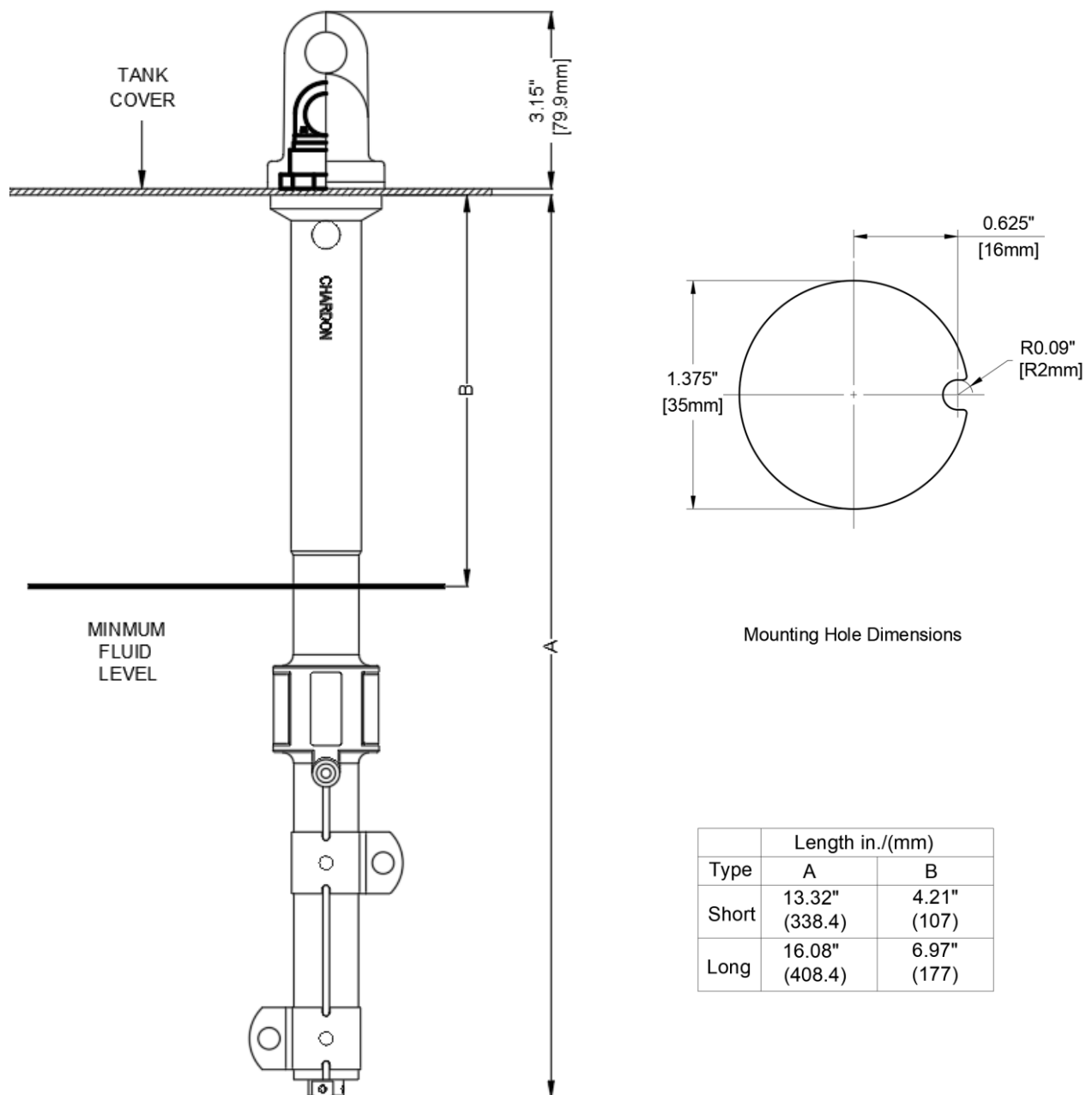
a) Sidewall Mounted Fuse Holder: Insert the outer tube of the fuse holder into the sidewall of the tank (refer to the Figure 1 & 2). Ensure that the gasket is positioned inside the tank wall, and the fixed nut is on the outside, as shown in Figure 1. Proceed to tighten the lock nut and then further secure it using a wrench for a quarter to half a turn. The lock nut should be tightened to a torque of 18-20Nm to achieve effective sealing. If the tank wall has a thickness of 1/4" (6.35mm) or greater, the side of the lock nut with cavity numbers (1 or 2) should face the outside of the tank.



(Figure 1: Installation view of the Sidewall Mounted Bayonet Fuse Holder)

(Figure 2: Tank mounting hole for sidewall-mounted assembly)

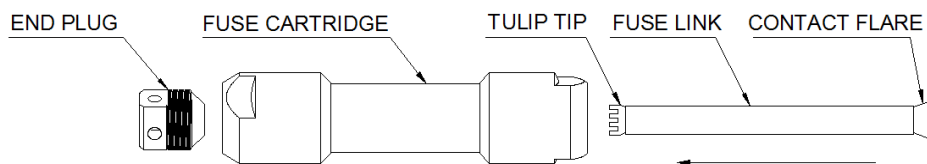
b) Cover Mounted Bayonet Fuse Holder: Insert the outer part of the fuse holder into the upper wall of the tank (refer to Figure 3). The gasket should be positioned inside the tank wall, while the fixed nut should be on the outside, as shown in Figure 3. Tighten the lock nut and further secure it using a wrench for a quarter to half a turn, ensuring the lock nut is tightened to a torque of 12-15N.m for effective sealing.



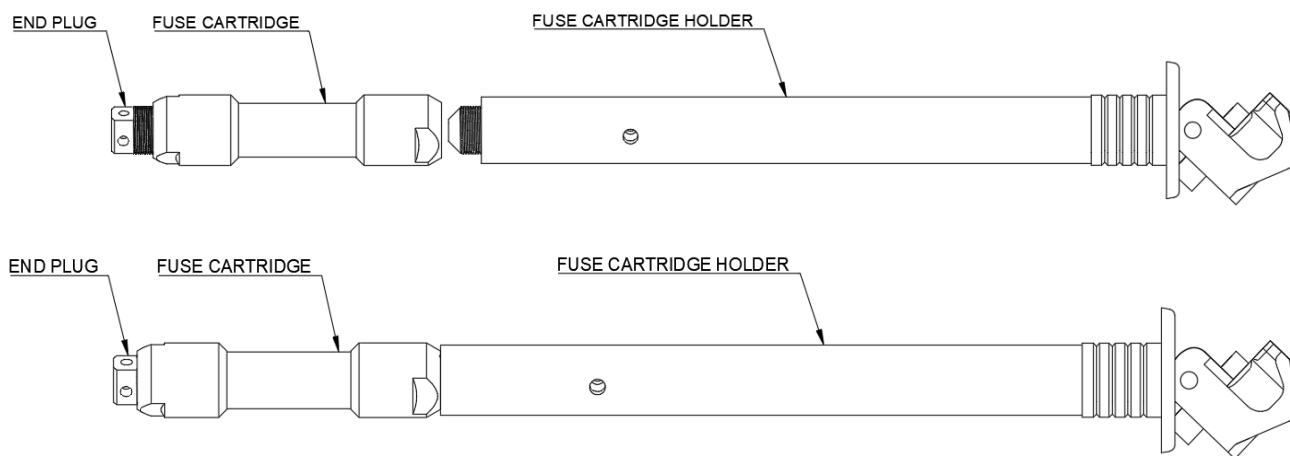
(Figure 3: Installation view of the Cover Mounted Bayonet Fuse Holder)

Step 2 Connection of the High Voltage Input: Connect the high voltage input to the load switch or backup protection fuse first. Next, connect the backup protection fuse or load switch to the bottom contact of the fuse holder. Finally, link the transformer winding to the upper contact of the fuse holder. (Important: Ensure that all cables are situated below the minimum fluid level.)

Step 3 Installing the Fuse into the Cartridge: Place the fuse into the fuse cartridge (refer to Figure 4). Tighten the end plug of the fuse cartridge to a torque of 10-12N.m and then further secure the fuse cartridge into the fuse cartridge holder to a torque of 10-12N.m (refer to Figure 5).

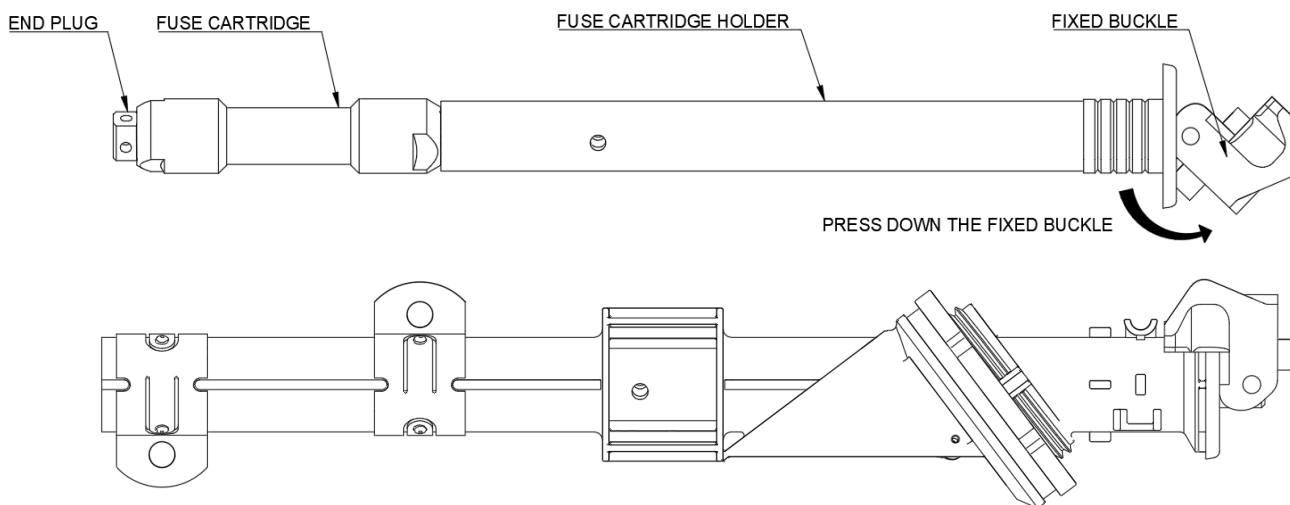


(Figure 4. Place the fuse into the fuse cartridge)



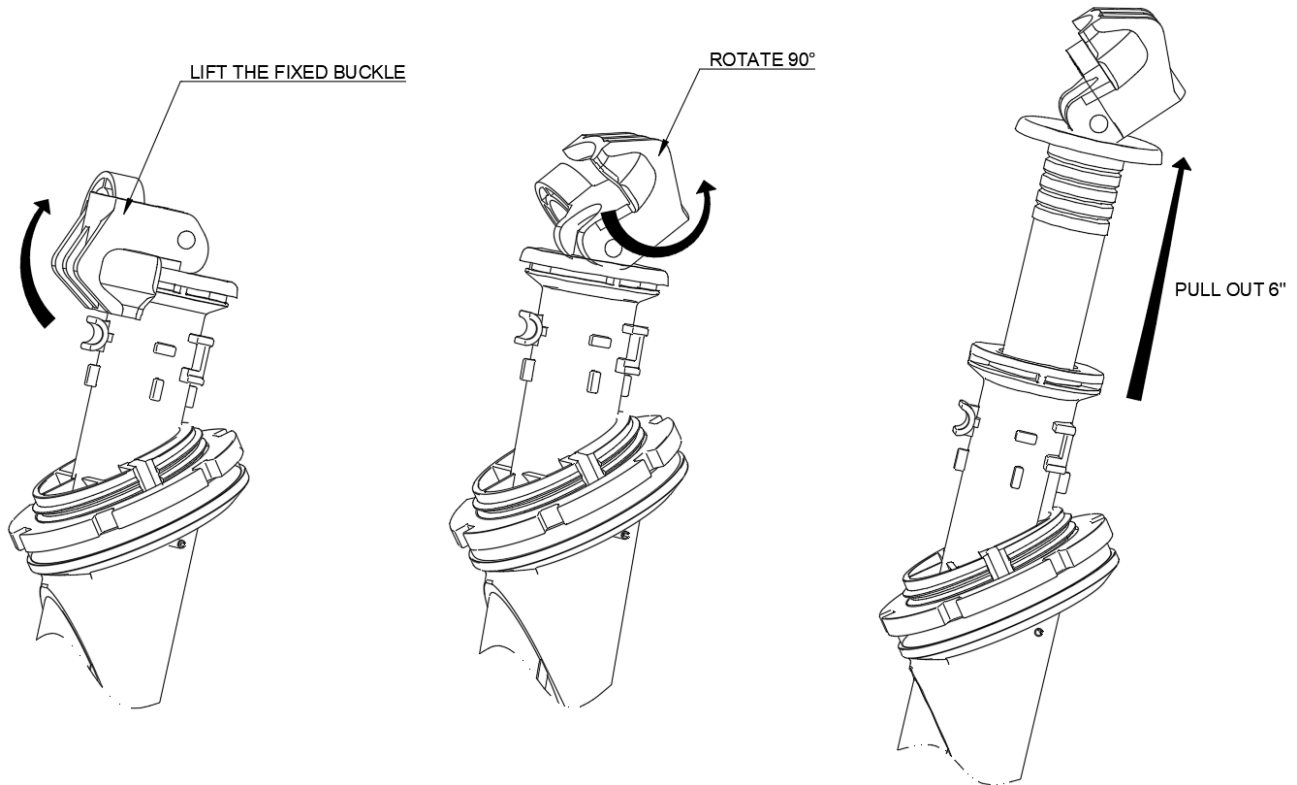
(Figure 5. Secure the fuse cartridge into the fuse cartridge holder)

Step 4 Installing the Fuse Cartridge Assembly: Fully insert the fuse cartridge holder assembly, which comprises the fuse cartridge and end plug, into the outer tube of the fuse holder. Press down the fixed buckle to lock it securely (refer to Figure 6).



(Figure 6. Press down the fixed buckle to lock it securely)

Step 5 Removing the Fuse: When you need to remove an existing fuse, lift and rotate the fixed buckle 90° clockwise within the housing. This rotation breaks any adhesion between the gasket and the housing. Then, gently pull the fuse holder out approximately 6 inches to deactivate the circuit. Wait a few seconds to allow for oil drainage back into the tank before completely withdrawing the fuse holder (refer to Figure 7).



(Figure7 Pull out the fuse holder)

Because these instructions do not attempt to provide for every possible contingency, contact us immediately if you have any problems or questions during install connector.

CHARDON GROUP

No. 808, TaiJi Road, EDZ Guangde City,

Anhui Province, CHINA

Tel: +86-0563-2216688 Fax: +86-0563-2251805

Mail: sales@chardongroup.com <https://www.chardongroup.com/>

