



CHARDON CONNECTIVITY SOLUTIONS IN RENEWABLES

CHARDON, one of the world's largest manufacturers of medium-voltage insulated cable fittings, globally supplies pre-molded EPDM detachable terminals, cold shrink cable terminations in silicone, metal shear bolt / compression connectors, epoxy bushing inserts, in addition to components for manufacturers of transformers and other energy systems.

In order to provide more agility and reliability to companies in the Renewable Energy industry in Latin America (Wind Farms and Solar Power Plants), Chardon Group also provides Customized JUMPERS widely used in this market.



CHARDON JUMPERS

CHARDON JUMPERS are pre-assembled MV cable sets with detachable and/or overhead connector terminals (shrinkable termination) installed at their ends, according to customer specification, grounding, etc.



APPLICATIONS

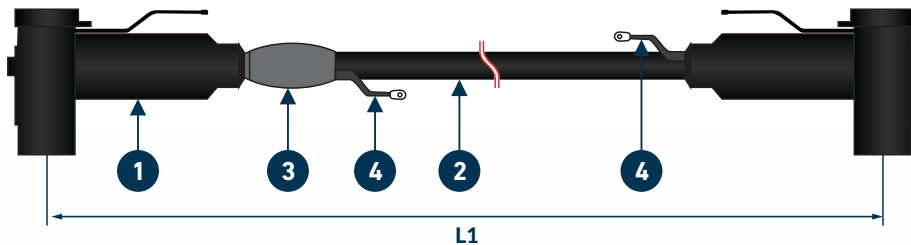
CHARDON JUMPERS can be used in SKIDS (mobile substations in the RMU / Transformer interconnections) in solar farms, wind power plants, commissioning tests and other customer needs.



BENEFITS

- ▶ Connection reliability
- ▶ Ready to install (PLUG-IN)
- ▶ Elimination of specific labor
- ▶ Tested in our own laboratory
- ▶ Custom identification
- ▶ Complete line of ANSI and IEC fittings
- ▶ Application voltages 17.5kV, 24kV, 36kV and 42kV with 250, 400, 630 and 1250A currents

DESIGN AND CUSTOMIZATION



1. Detachable and overhead connector terminals adapted according to the type of interface, voltage class and conductor diameter.
 2. Cable length (L1).
 3. Sealed by CHARDON CJS cold shrink tube (optional).
 4. Grounding cord with eyelet.
- Other sealing, grounding and finishing solutions are available upon request.

OPTION WITH SHRINKABLE TERMINATION



CONNECTORS

Metal connector (Conductor gauge – mm²)



Shear bolt connector



Compression connector

TECHNICAL STANDARDS

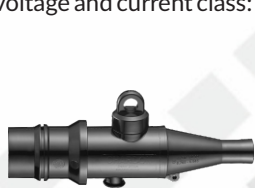
CHARDON JUMPERS comply with the requirements of IEC 60502 and IEEE 386 standards.

CHARDON
GROUP



PRIMARY INSTALLATION PRODUCTS

Detachable connector and/or shrinkable termination are selected according to the type of interface (type A, B and C), conductor gauge, diameter over insulation, voltage and current class:



DIRECT CONNECTOR
TYPE A



ELBOW CONNECTOR
TYPE A



CONNECTOR
TYPE C



15, 25 & 35 Kv
TERMINATION

RELATED PRODUCTS



ELBOW ARRESTER

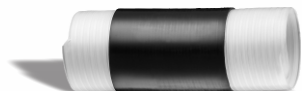


REAR CONNECTOR



EPOXY BUSHING INSERT

OPTIONAL FITTINGS



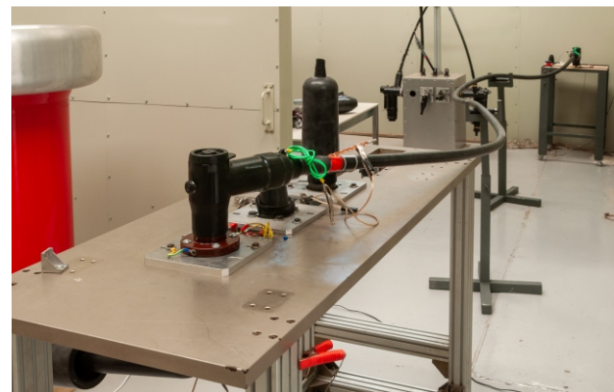
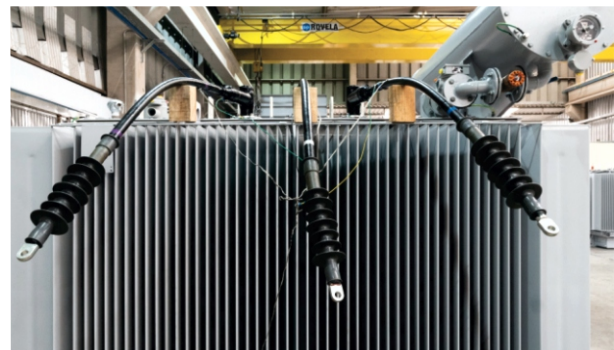
Chardon CJS Cold Shrink Tube

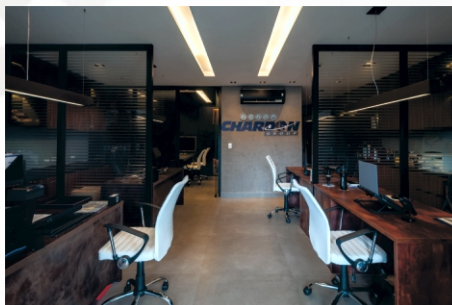


Chardon SADP Ground Adapter

POST-ASSEMBLY TESTS

We carry out the applied voltage test on CHARDON JUMPERS and issue a test report before delivery to the customer. Other tests can be conducted upon customer request.





Chardon Brasil Produtos e Serviços de Energia Ltda.

Rua Azuma, 256 – Distrito Industrial Rafael Diniz

Bragança Paulista, SP • CEP 12.929-586

 (+55 11) **4603-1888**

 www.chardongroup.com  info@chardongroup.com

Acesse nosso site:

