

## 15/25/35 kV 200A PORTABLE FEED-THRU INSTALLATION & OPERATING INSTRUCTIONS

### DESCRIPTION:

The Feed-Thru is designed to operate with a bushing well meeting the interface requirements of Fig. 3 of the IEEE standards for Separable Insulated Connector Systems, ANSI / IEEE 386. The Feed-Thru can be used as a junction point or a grounding point. The elbow interface of the Feed-Thru meets the requirements of ANSI / IEEE 386 as defined below:

- Class 15kV 200A (8.3kV and 8.3/14.4kV)
- Class 25kV 200A (15.2kV and 15.2/26.3kV)
- Class 35kV 200A (21.1kV and 21.1/36.6kV)

### KIT CONTENT:

- Feed-Thru body with mounting hardware
- Paper Towel
- Shipping (protective) caps
- Installation Instructions
- Silicone Lubricant



### CAUTION:

- The installation of Chardon products must be carried out by qualified technical personnel.
- Contact with energized equipment can cause serious damage and even death.
- Wear appropriate protective equipment.
- Make sure Chardon Accessories are completely dry and in good condition at the time of installation.



### DANGER:

- Do not touch or handle energized products without adequate protective equipment. Errors in the compliance of this instruction can result in damage to the product, serious injuries to people and even death.
- All associated equipment must be de-energized during installation and maintenance.
- The following instructions do not cover details or variables in the change / installation of the product, to prevent contingencies, please contact the team of Chardon technicians if required.

### SAFETY INFORMATION

The instructions in this manual are not intended as a substitute for proper training or adequate experience in the safe operation of the equipment described. Only competent technicians, who are familiar with this equipment should install, operate and service it.

### Warranty

Chardon products are guaranteed for a period of 2 years after their date of purchase, to make this guarantee effective you can come only by presenting a purchase invoice to your authorized Chardon distributor. The warranty will not be valid in the following cases:

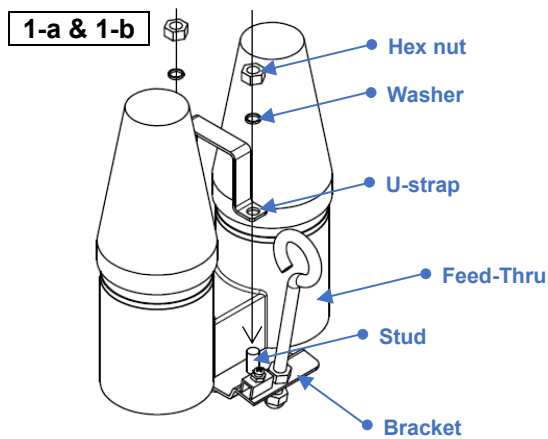
1. When the product has been used under conditions other than normal.
2. When the product has not been operated according to the instructions for use.
3. When the product has been altered or repaired by persons not authorized by Chardon.
4. When using components that are not compatible with Chardon accessories.

Inasmuch as CHARDON GROUP, Inc. has no control over the use which others may put the material, it does not guarantee that the same results as those described herein will be obtained, each user of the material should make his own tests to determine the material's suitability for his own particular use. Statements concerning possible uses of the materials described herein are not to be construed as constituting a license under any CHARDON GROUP, inc. patent covering such use or as recommendations for use of such materials in the infringement of any patent.

FOR FURTHER INFORMATION WRITE TO

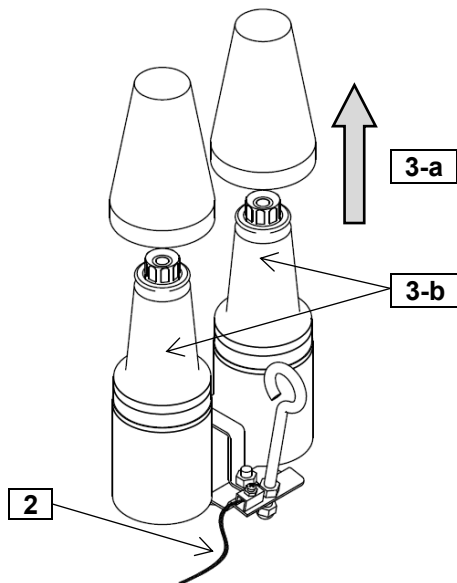
Chardon Worldwide: [sales@chardongroup.com](mailto:sales@chardongroup.com)

Chardon Mexico: [chardonmx@chardongroup.com](mailto:chardonmx@chardongroup.com)



### STEP 1:

- a) Place the Feed-Thru on the bracket.
- b) Put the U-strap, washer, and hex nut into the stud in sequence.
- c) Tighten the hex nut until the lower washer is flat.



### STEP 2:

Attach #14 AWG drain wire or equivalent to the grounding lug on the feed-thru.

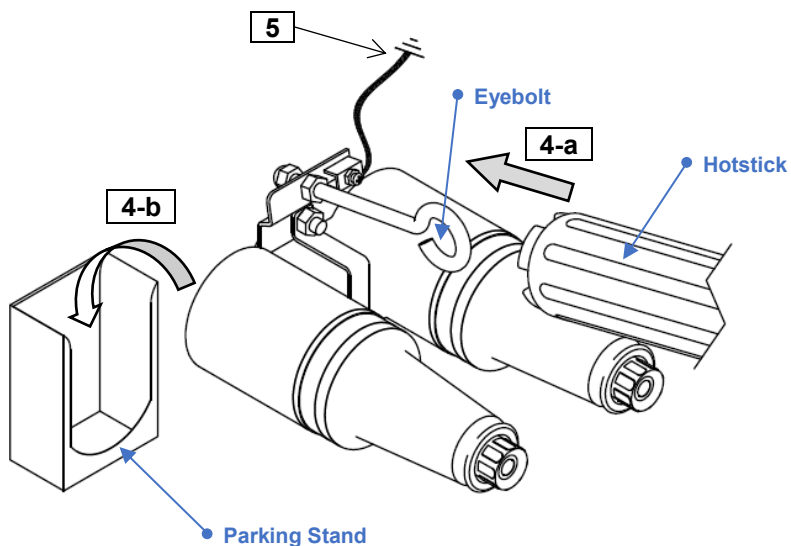
### STEP 3:

- a) Remove shipping (protective) caps.
- b) Clean and lubricate feed-thru interfaces with lubricant supplied.



#### NOTE:

Do not substitute other lubricants for those provided.



### STEP 4:

- a) Hook the nozzle through its eyebolt.
- b) Insert it into the "Parking Stand" of the branch box or device where you want to install it, once in position, turn the eyebolt clockwise to fasten the nozzle.

### STEP 5:

Attach the wire to the system ground.

### STEP 6:

- A) To use feed-thru as a junction point, please follow the instructions provided with the junction.
- B) To use the feed-thru as a grounding point please follow the instructions provided by the grounding elbow.

### WARNING

If Three-Phase loop circuits are being connected, both loadbreak elbows forming the loop must be from the same phase. Failure to comply can result in death or serious injury to the operating personnel.