

Transformer Components

200A Bushing Well



GENERAL

The Chardon 200A 15kV,25kV,28kV and 35kV Class bushing wall meets all requirements of IEEE standard 386-1995 (separable insulated connector system).

It is designed for the termination of primary winding leads at the face plate of oil filled (or approved equivalents) single phase and three phase transformers and switchgear rated at 8.3/14.4kV, 15.2/26.3kV, 16.2/28.0 kV and 21.1/36.6 kV.

The Chardon bushing well is externally mounted and clamped in place with either stainless steel or galvanized mild steel 3 or 4 hole mounting clamps. It fits in a 2.56inch (65mm) hole on the apparatus tank wall. The Chardon bushing well is designed to accept Chardon bushing inserts, as

well as all others meeting IEEEStandard 386.

It’s knurled copper stud, with rolled threads, provides excellent conductivity.

Chardon bushing wells are molded in-house, under Chardon’s strict quality assurance procedures. The Zytel HTN material provides excellent temperature stability, strength, durability, low moisture absorption, and retention of critical mechanical and electrical properties in humid, high temperature environments. The mounting gasket provides a consistent, controlled compression sealing of the bushing well to the apparatus tank wall.

INSTALLATION

The Chardon bushing well is installed on the tank wall of the oil filled (or approved equivalents) transformer or switchgear. The rubber gasket is placed in the groove on the rear side of the bushing well (facing the transformer or switchgear). The steel clamp is then placed over the bushing well, and through the threaded studs mounted on the tank wall. The clamp is then bolted in place.

PRODUCTION TESTS

- AC 60Hz 1 Minute Withstand – 26 kV
- Minimum Corona Voltage Level – 50 kV
- Test Point Voltage Test

Internal Chardon Quality Assurance requirements:

- Physical Inspection
- Periodic Dissection
- Periodic Fluoroscopic (X-Ray) Inspection

VOLTAGE RATINGS

Standard Voltage Class	35 kV
Maximum Rating Phase-to -phase	36.6 kV
Maximum Rating Phase-to -ground	21.1 kV
Ac 60 Hz 1 Minute Withstand	50 kV
DC 15 Minute Withstand	103 kV
BIL and Full Wave Crest	150 kV
Minimum Corona Voltage Level	26 kV

CURRENT RATINGS

Description	Test Parameters
Continuous	200 amps rms
Short Time	• 10,000 amps rms symmetrical for 0.17 s • 3,500 amps rms symmetrical for 3.0 s

• CH200BW-090722 REV06

ORDERING INFORMATION

To order a Chardon 200A Bushing Well, specify the clamp from Table 3.

Description	Catalog Number	Refer To Figure
Bushing Well	CH200BW	1
Bushing Well with 3-hole Clamp, Mild-Steel-Zinc-Dichromate plating	CH200BW3ZD	2
Bushing Well with 3-hole Clamp and Flange, Stainless Steel	CH200BW3SS	2

* Gasket and Shipping Cap included with Bushing Well

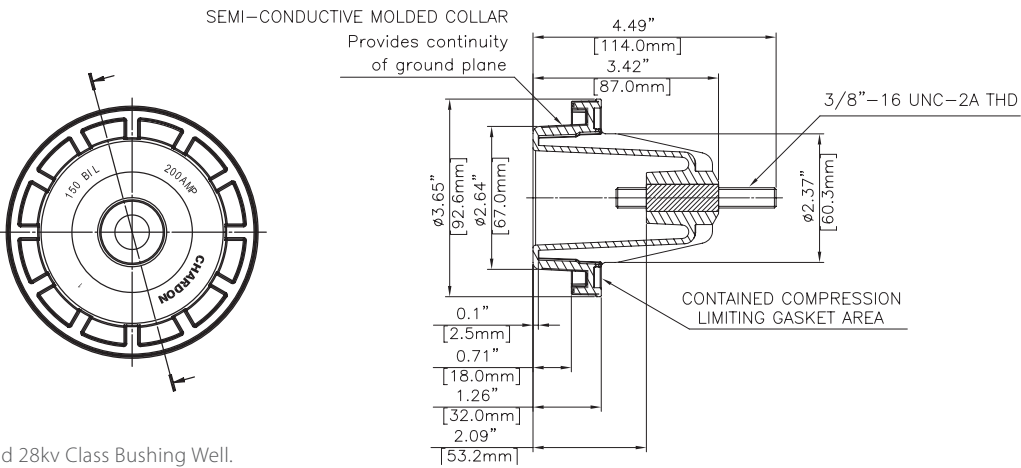


Figure 1: 200A 15,25 and 28kv Class Bushing Well.

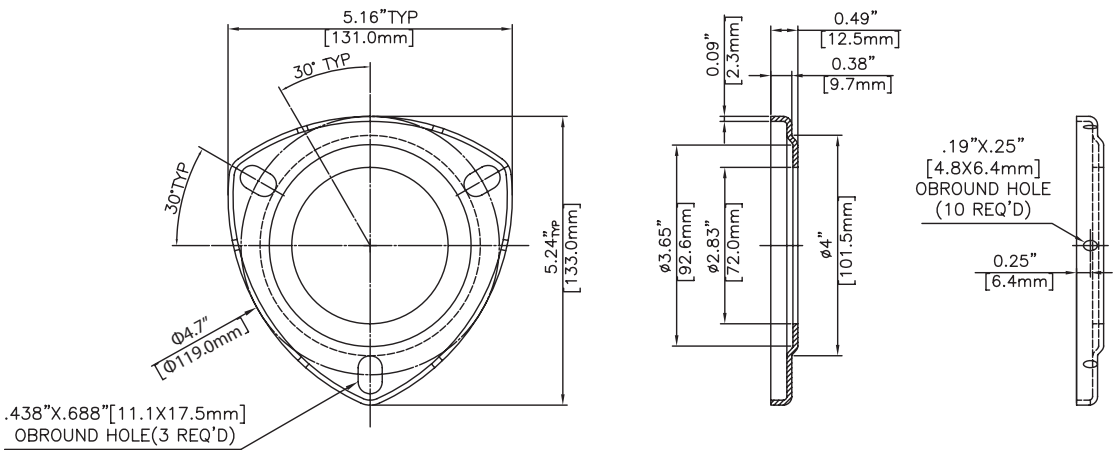


Figure 2: Stud Clamp with flange.

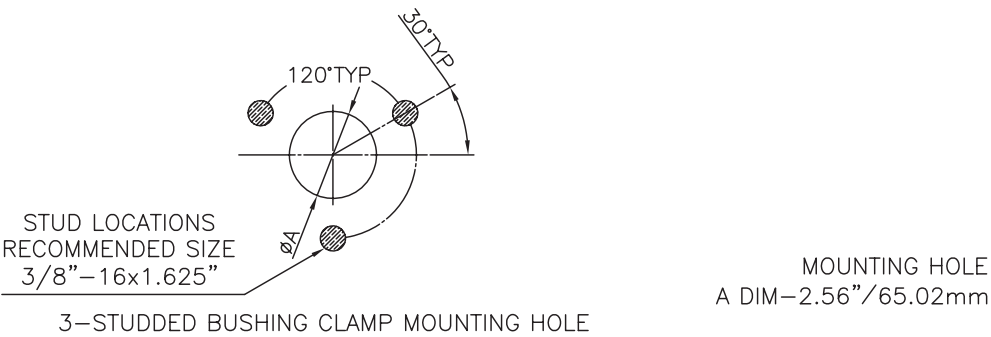


Figure 3: Recommended tank wall dimensions.



CHARDON TAIWAN CORPORATION

No.37 Min-Chie Road, Tung Lo
Industrial Park, Miao Li, Taiwan 366

Tel : +886-37-984385

Fax : +886-37-984770

www.chardongroup.com • info@chardongroup.com